

SHEET TITLE : AZTECH FW60-4

DRWG. NO.: FW6-071006 DRAWN BY: TAA

DATE: 07/10/06 SCALE: NTS

SPECIFICATIONS:

DIMENSIONS: 102"H X 130" W X 26.5" D

MOTOR: 5 HP 208-230/460/3/60 TFC MOTOR, 14, 0-12.6/6.3 FLA

CFM: 7500 CFM

CONSTRUCTION 1/4 & 1/6 GA POWDER COATED STEEL FRAME.
3/16 POLYETHYLENE PANELS. FULL CARBON STEEL CONSTRUCTION AVAILABLE.
4-WAY ALUMINUM EXHAUST GRILLE

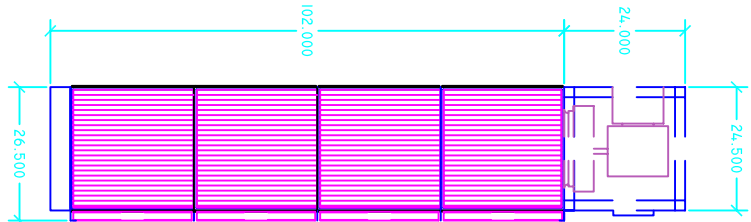
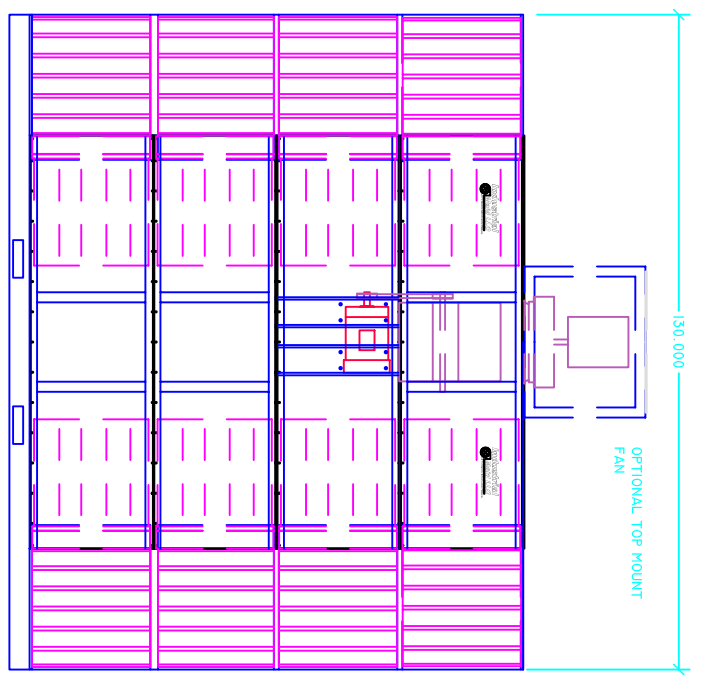
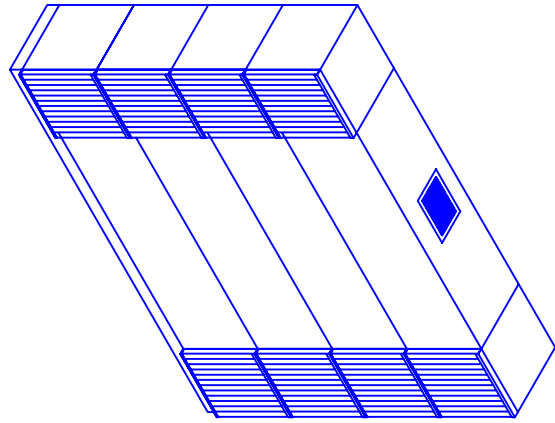
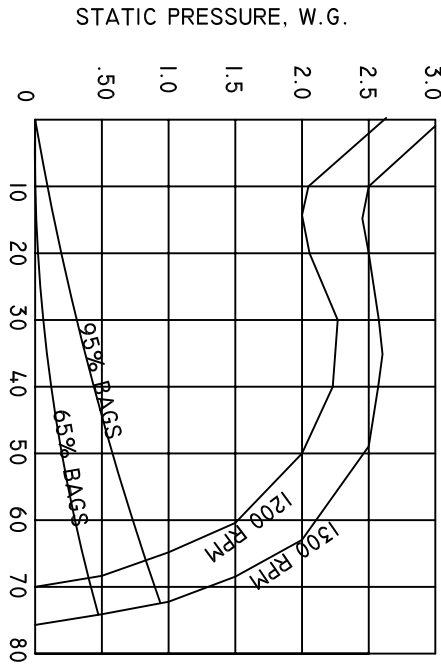
ELECTRICAL WIRED TO JCT. BOX
OPT. MOTOR STARTER

BLOWER: 12 X 12 FORWARD CURVED BLOWER
OPTIONAL BI TOP MOUNTED FAN

FILTERS: 2" ALUMINUM BAFFLE PREFILTER
2" ALUMINUM MESH
4" PLEATED PREFILTER
95% FIBERGLASS BAG FILTER

OPTIONS: HEPA AFTER FILTER
SILENCER
MAGNAHELIC PRESSURE GAUGE

WEIGHT: 950 LBS.



DISTRIBUTED BY:



COPYRIGHT: THIS DOCUMENT AND THE INFORMATION CONTAINED MAY NOT BE REPRODUCED OR DISTRIBUTED WITHOUT EXPRESS WRITTEN CONSENT OF INDUSTRIAL MAID. UNAUTHORIZED REPRODUCTION, DISCLOSURE, OR MANUFACTURING USE ARE PROHIBITED BY COPYRIGHT LAW.

INDUSTRIAL MAID LLC
351 S. 12TH RD.
CORTLAND, NE 68331
PH. (402) 798-7116
FAX (402) 798-7117
WWW.INDUSTRIAL-MAID.COM