

SPECIFICATIONS:

DIMENSIONS: 25" H X 72" W X 25" D

MOTOR:
 3/4 HP, 115/230V/1/60, 2 SP., 10.2 FLA
 2 HP, 115/208-230V/1/60, 20.0/10.8-10.0 FLA
 2HP, 208-230/460/3/60, 6.0-5.8/2.9 FLA
 3HP, 230/460/3/60, 8.6/4.3 FLA

CFM:
 3/4 HP - 3,000 CFM @ .6" W.G.
 2 HP - 3,500 CFM @ 1.0" W.G.
 3HP - 4,500 CFM @ .85" W.G.

CONSTRUCTION 12 & 14 GA POWDER COATED STEEL FRAME:
 3/16 POLYETHYLENE PANELS, FULL CARBON STEEL CONSTRUCTION AVAILABLE:
 4-WAY ALUMINUM EXHAUST GRILLE

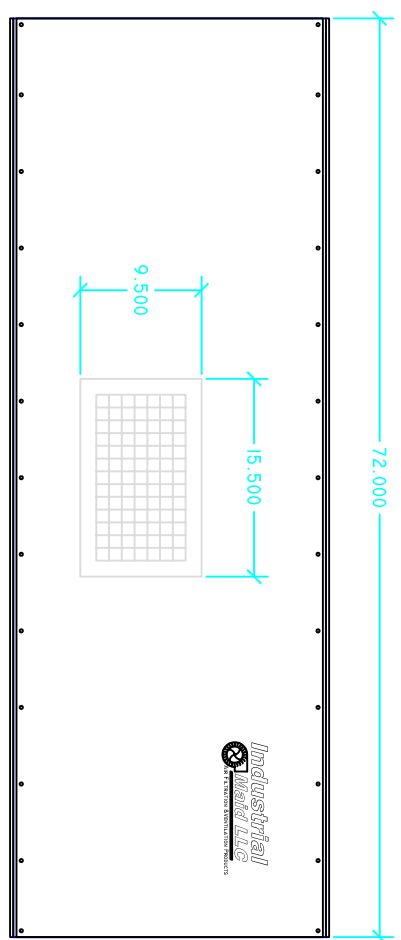
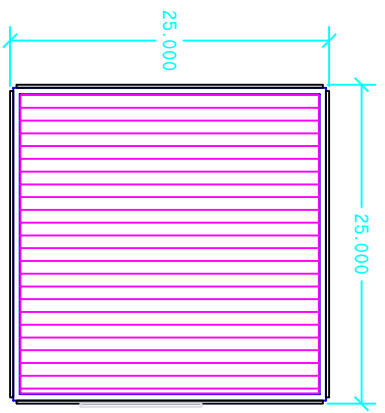
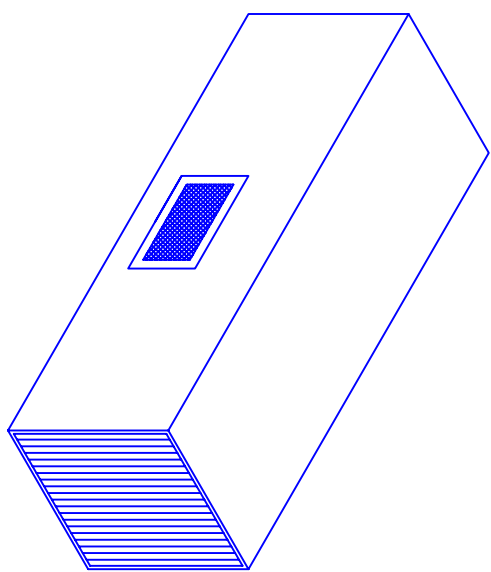
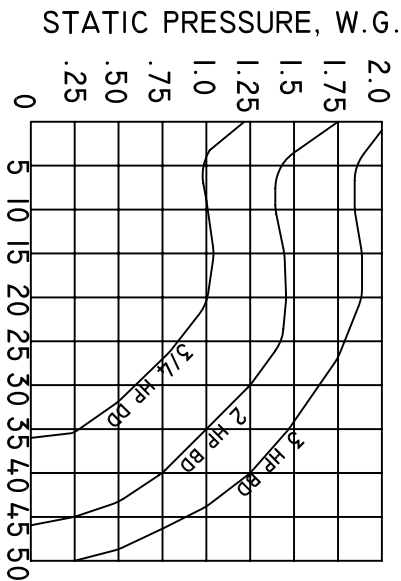
ELECTRICAL 3/4 HP - 12 FT CORD & 2 SP. SWITCH
 2 HP/1 PH. - WIRED TO JCT. BOX
 2 & 3 HP, 3 PH. WIRED TO JCT. BOX

BLOWER: 10 X 10 FORWARD CURVED BLOWER
 3/4 HP DIRECT DR. 2 & 3 HP BELT DR

FILTERS: 4" PLEATED PREFILTERS, 22.3 SF EA
 (2) 95% BAG FILTER, 80 SF EACH
 (2) 65% BAG FILTER, 80 SF EA (OPT.)
 2" CARBON TRAY (OPT.)

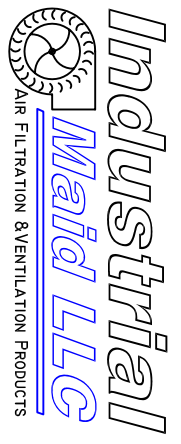
OPTIONS: EMBOLTS (INSTALLED)
 SILENCER
 MAGNAHELIC PRESSURE GAUGE

WEIGHT: 170 LBS - T3500
 180 LBS. - T4500



DISTRIBUTED BY:

COPYRIGHT: THIS DOCUMENT AND THE INFORMATION CONTAINED MAY NOT BE REPRODUCED OR DISTRIBUTED WITHOUT EXPRESS WRITTEN CONSENT OF INDUSTRIAL MAID. UNAUTHORIZED REPRODUCTION, DISCLOSURE, OR MANUFACTURING USE ARE PROHIBITED BY COPYRIGHT LAW.



INDUSTRIAL MAID LLC
 351 S. 12TH RD.
 CORTLAND, NE 68331
 PH. (402) 798-7116
 FAX (402) 798-7117
 WWW.INDUSTRIAL-MAID.COM